

# THE PLAYING FIELD

*Newsletter of  
Surrey Playing Fields - January 2017*



## NINETY YEARS OLD

Surrey Playing Fields Association will be celebrating the 90<sup>th</sup> Anniversary of their first meeting which was held in County Hall Kingston on 27<sup>th</sup> February 1927. The Association was set up by the then Lord Lieutenant, Henry Cubitt, 2nd Baron Ashcombe and each succeeding Lord Lieutenant has been our President right up to the present day with Michael More Molyneux now in post.

The Surrey Playing Fields then as now are run by purely voluntary effort. It has seen a vast number of changes over the years with the principal supporters in the early years being the Land Owners Association, Boy Scouts, Girl Guides, the Women's Institute, Local Authorities and Businesses of Surrey. Their stated aim in 1927 was to "arouse and stimulate local interest in the provision of playing space for children and adults". Today it is to "ensure that there are sufficient playing fields for the provision of formal and informal play" and whilst Local Authorities still play a role in our existence, various sporting governing bodies and sporting partners such as the County Sports Partnership, Fields in Trust and Local Sports Councils are more to the forefront of the Association

### Contents

- 1 90 years old
- 2 Jim Faulkner BEM
- 3 Safeguarding in Sport
- 4 Claygate Cricket Club  
Play Equipment -  
Refurbish or Replace
- 5 Surrey Sports Awards  
2016
- 6/7 Club & Coach  
Conference 2017
- 8 Contacts  
New BDO for Epsom &  
Ewell - Andrew Tibble



It was in 1935 that the first of the King George V Playing Fields arrived and in 2012 to commemorate the Queen's Jubilee, we managed to get nearly 60 Playing Fields dedicated in perpetuity for Sport and Recreation, one of the highest in the country, thus safeguarding them for future generations.

Our well known Grants and Loans structure helps clubs maintain their aspirations and our Bursary Fund helps young people add to their coaching and athletic abilities. In addition SPF are a valuable source of advice on everything from grounds maintenance to dealing with threats to fields by developers and ensuring that play space fits with national standards.

We have invited Tracey Crouch, MP the Sports Minister plus other local dignitaries to join in our celebrations to mark 27<sup>th</sup> February 1927 and hope to round off the year with a Gala Dinner at Reigate Manor where we will be inviting our National President Prince William to be present.

If you would like to help us to continue this very valuable work please contact one of our officers listed on page 8 of this newsletter.

**Gerry Ceaser - Chairman**

*For sports help throughout Surrey*  
**Affiliated to the National Playing Fields Association**

The work of the Surrey County Playing Fields Association is funded by subscriptions from local authorities at county and district levels and parish and town councils. It also receives funding from Sports Clubs and individuals. Details are in our Annual Report.

We thank them all.

## Organisations on SCPFA Advisory Committee

Surrey County Council  
Surrey County Football Association  
Surrey County Rugby Football Union  
Surrey Sports Board  
Surrey Community Action

Active Surrey  
Surrey County Lawn Tennis Association  
Surrey Cricket Foundation  
Surrey County Athletic Association

We are grateful for their support and wise counsel

## JIM FAULKNER B.E.M.



Surrey Playing Fields are pleased to announce that Jim Faulkner, our long serving Secretary, has been awarded the British Empire medal (BEM) in the Queen's New Years Honours for his services to Playing Fields and we offer him our sincere congratulations for an honour well deserved.

In the late 1950's Jim first got involved in Sport when at the age of 14 he became Team Secretary for the Colts Section of a cricket club that held its committee meetings in the pub that his father ran in Caterham. He was then elected to the main Club Committee and shortly after was the first time he became aware of Surrey Playing Fields.

In the 1960s he moved to Warlingham Cricket Club to improve his game, soon joined the Committee of the Cricket section and then the main Club Committee. Whilst at Warlingham he worked on plans for and saw built both a new cricket pavilion and then squash court. He went on to become both Secretary and then Chairman of the Club..

During the 1970's and 80's he was part of Tandridge Sports Council, became further involved in cricket county wide and at the same time helped to reorganize youth cricket in Surrey.

In 1982 he became the Cricket representative on the Surrey County Playing Fields Association. Following the death of the then Secretary, David Reeds, he became Hon. General Secretary, a post he still holds. This position lead to working with many other organisations in the sporting field including Surrey Cricket, Surrey Football, Sport Relief Grants (Now replaced by Comic Relief Grants), Surrey Sports Board and Active Surrey

He was a member of the combined County Playing Fields Committee, and helped arrange their National Conference for a number of years and one occasion ran the conference held at Surrey University. Partially due to this work he received an National Playing Fields Associations President's Certificate from the Duke of Edinburgh in 1998. This is awarded for outstanding work on behalf of the Playing Fields Movement.

He helped run and expand a Table Tennis Club in Copthorne and in Cranleigh, he helps with U3A table tennis. His competitive sport is now limited to playing in Division 4 of the Guildford Table Tennis league. This means that he sits on the management committee of Abinger Sports Club.

Jim has spent his non working life in the service of sport and his local community and not only do we thank and appreciate what he has done, and is still doing, for Surrey Playing Fields but also for the wide community in which he lives.

An Honour well deserved!!!



## Safeguarding in Sport – by David Gill, SPF Director

Given the national publicity that it's created in recent months, the biggest issue in sport currently, both nationally and at county level, is the safeguarding of young and vulnerable people.

Any club that offers a sport or activity to children or young or vulnerable people, for example, has a responsibility to safeguard them. Essentially, to make sure they are all kept safe from harm. For every club in Surrey, the safety and welfare of its participants must be their primary consideration. For further information, you can look at the Child Protection in Sport Unit [CPSU] website which provides excellent advice and support around safeguarding of children. In addition, both Active Surrey and the national governing body for your particular sport will promote requirements, guidelines and procedures around safeguarding for you to follow. Check out their websites or, better still if you're unsure, contact them directly. Many governing bodies, such as the Surrey County FA, are being pro-active and will offer regular training courses as well.

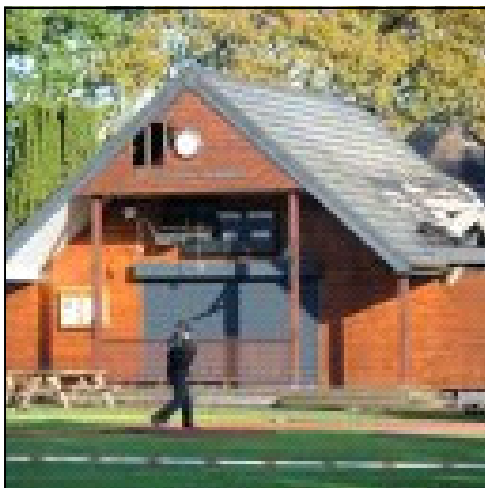
Essentially, to protect children, young people and vulnerable people [this could be people with disabilities or older people], you need :

- A Safeguarding policy
- Code of conduct
- Preventative arrangement
- Reporting abuse procedures and systems
- Monitoring system

Clubmark is a national accreditation system for clubs that defines minimum operating standards, including a strong safeguarding policy. Hundreds of Surrey sports clubs either have Clubmark or are accredited by their National Governing Body's equivalent scheme. In my view, more and more parents will, in future, want to know if the sports club they'd like their child to join is an accredited club. They should be safer.

## Claygate Cricket Club

We were all very sorry to hear that Claygate Community Clubhouse was destroyed by fire early on Monday 7th November. Surrey Playing Fields supported the original development and will look to provide assistance with recovery of the facility. On hearing the news on the morning of the fire, the Surrey Cricket Foundation immediately gave a grant of £5,000 to help.



The club is located on a ground owned by Elmbridge Borough Council who want to start a rebuild in September. In the meantime the club will have to cope with temporary changing facilities. Following Elmbridge Borough Council's requirement to obtain three quotes for the structural survey, consulting engineers were appointed and a full structural analysis carried out before Christmas.

Critically, the report concluded that, there was no damage to the structural steel beams and breeze block walls. Demolishing the building is not required. There was however considerable damage done to all timber in the roof and the ceiling members will all need to be removed. The foundations and the concrete ground floor slab can be retained. SPF will be pleased to hear that the electronic scoreboard, that we part funded, can be salvaged.

Being a go ahead club they are already fundraising. They hope to take the chance to provide improved facilities for the Club and the Community. Please look at the Claygate Cricket Club website where you can keep up to date with their progress and, more importantly, see how you can help.

## Play Equipment - Refurbish or Replace

'... Can we can keep it running...', '... I know our budget is stretched but...', are often the introductory words signalling difficult discussions and financial problems ahead. Frequently the signs have been there for a while with warnings of corrosion or rot becoming more visible over recent time. However when the message comes, it is difficult and often catches operators on the wrong foot.

Yes, we all know that nothing lasts for ever, and hold fond memories of past items that seemed so well built and apparently did go on and on, be it a grinning rocking horse or plank see saw. Indeed with construction materials of the 1970's being largely not of wood but of metal, gas pipe or cast iron, utilising resources whilst offering limited design opportunities, were in some cases more robust. However the playground equipment ranges then were very limited in comparison to the 1000's now available.

Today many items of equipment have a more limited lifespan and careful consideration of whether it is financially appropriate to refurbish or to replace needs to be taken. For vandalised items, repair is normally the fastest route to getting the playground fully running again and, crucially, reducing the probability of further vandalism by promptly addressing the issue. For broken items, it is important to remove or repair them, albeit temporarily, until a full repair can be undertaken, making sure that the temporary repairs meets the same standards of safety, such as entrapment, barrier heights and structural security. The final repair should always utilise manufacturer's original parts.

However is it appropriate to repair or refurbish as often the costs are substantial? How much life is left in the equipment? Is it appropriate to spend good money on old worn out equipment? It is considered that with regular maintenance, repair and no vandalism that life spans can be, for timber, approximately 10 years and for metal/plastics approximately 20 years. It is a question of the manufacturer that should always be established, preferably when initially purchasing the item. Are the items on the playground providing the range of opportunities that are appropriate for those communities' children? Is it all climbing and agility items or are there swinging, sliding, rotating and rocking items?



### **Robust SAFETY Inspections**



#### **Play & Sports areas, Parks, Ponds, Schools & Gyms**

Detailed reports inspecting to approved UK & EU Standards  
Risk Benefit Assessment & Guidance for prioritising actions  
Identifying photographs & advice on problems found  
Quality 'Seal' RPII Annual Play Inspectors  
Independent of any manufacturer or maintenance company  
Training courses for weekly & quarterly inspectors  
30+ years' experience  
Surrey County PFA Children's Play Advisor  
Register of Play Inspectors International – Annual Inspect  
RPII Examiner  
Institute of Expert Witnesses – full member



**Contact Today** – Active Risk Management  
Services Ltd

**07970 764 804**

[infor@activerms.org](mailto:infor@activerms.org)

Comparisons with neighbouring authorities are always interesting, as are new play designs. These, for example, may provide more challenging items such as slides designed like 'bannister' rails or a group 'birds nest' swing seat alternating quiet opportunities for mother and child with groups of energetic children.

Is the demise of one item providing the opportunity for change? Is the problematic item on its own or, as is often the case, was it installed at the same time as others? In which case similar problems may be there and need to be checked.

Most important of all however, is not to be too caught out. It is by regular checks and inspections that we can improve our awareness and then plan. Play areas thankfully are normally safe places; it is when surprises are sprung on us that the problems start.

**Jean Wenger**  
**Surrey Playing Field Play Advisor**





Surrey Playing Fields is one of the sponsors of the annual Surrey Sports Awards. We sponsor the “Young Volunteer of the Year” category.

The winners of the Surrey Sports Awards for 2016 were named on 6 December at Woking's HG Wells Conference and Events Centre. Compered by Tim Durrans from BBC Surrey, the event celebrated the achievements of the county's top sportspeople as well as the volunteers and coaches who help ensure the next generation of sports stars are developed. To find the winners local sports awards are run in boroughs and districts across Surrey to recognise and celebrate the wealth of the local sporting talent and success over the last 12 months. Winners from the local Surrey borough and district sports awards then go through to the next stage to battle it out for the county titles.

The Surrey Sports Awards assessment panel then meet and whittle each category down to a short-list. The following were shortlisted for this category:

Lauren Taylor, AFC Brooklands (Runnymede)  
 Lucy Edgar, Frensham Pond Sailability (Farnham)  
 James Peters, Glyn School Rugby (Epsom & Ewell)

The winner was Lucy Edgar seen here receiving her award as Young Volunteer of the Year from Chairman of SPF, Gerry Ceaser

Lucy is the lead coach at the Frensham Pond Sailability Youth Group which is run for and led by young sailors. She was nominated by her group to collect the Queen’s Award for Voluntary Service and through her coaching promotes a positive feeling of friendship and camaraderie amongst the young people who attend. She has shown commitment to personal development by also completing her Royal Yachting Association Powerboat (PB2) and Dinghy instructor qualifications.



# Club & Coach Conference 2017

Sunday 12 March - Leatherhead

Join us for a one day event for clubs and coaches with training workshops worth over £100 (see reverse for details).

**Book before 31st January for just £40!**  
(usual price £50).

## WHEN

Sunday 12 March 2017  
11:00am - 4:30pm

## WHERE

Leatherhead Leisure Centre  
Guildford Road, Leatherhead, Surrey, KT22 9BL

**KEY NOTE SPEAKER** • Tania Hoffman, Director of Netball at Surrey Storm

**MORNING WORKSHOPS** • Applying for Funding with London Marathon Charitable Trust • Coaching Children: The value of insight, empathy and adaptation • Using Social Media • Volunteering Forum • Sport Safe - Safeguarding

**AFTERNOON WORKSHOPS** • Safeguarding and Protecting Children (Sports Coach UK) • First Aid for Sport • Developing a Marketing Strategy • Adapting your Practise to Coaching Disabled Participants • Creativity in your Coaching

**activesurrey**



Limited spaces on workshops, book early to avoid disappointment.

Choice of one workshop for the morning and one for the afternoon.

**BOOK NOW**



# Workshops Available

## MORNING OPTIONS (11:30 - 12:45PM)

### **Applying for Funding with London Marathon Charitable Trust (LMCT)**

This workshop will include an overview and top tips on making a successful application to the London Marathon Charitable Trust by Joe Thompson (Senior Grants Officer at LMCT) as well as an overview of available Sport England funds and other local/regional funding sources that may be of interest to Surrey-based clubs.

### **Coaching Children: The value of insight, empathy and adaptation**

This interactive workshop aims to highlight key elements in coaching children by focusing on three key areas. Gaining further insight into a child's view of the world can give coaches a greater understanding of how they can optimise the environment. The workshop focuses on the critical role of play and the science of learning, and provides delegates with practical ideas to support their coaching.

### **Using Social Media**

This workshop will guide you through the different social media channels and how they can be used to promote your club/coaching. Focusing on skills and handy tips that can be utilized to help engage current members as well as attracting and retaining new members.

### **Volunteering Forum**

This interactive forum provides the opportunity to discuss volunteering techniques with fellow clubs and coaches and share your volunteering ideas.

### **Sport Safe - Safeguarding**

Safeguarding considerations for sports clubs from a Police perspective. Teaches awareness of signs/risk factors of possible Child Sexual Exploitation/abuse for club committee members.



## AFTERNOON OPTIONS (1:30 - 4:30PM)

### **Safeguarding and Protecting Children (Sports Coach UK)**

This workshop aims to increase awareness of safeguarding and protecting children, helping coaches to recognise signs of abuse and poor practice. It also prompts a review of coaching practice to ensure that sport provides a positive and enriching experience for children. Please note, the FA and LTA only accept their own Safeguarding Qualification.

### **First Aid for Sport**

This theory and practical based workshop is tailored to sport coaches covering: aims and principles of first aid, injury prevention, incident management, head injuries, treatment of unconsciousness, resuscitation, fractures, soft tissue injuries, sport specific topics and conditions which may affect the sports person. This is not suitable for tennis coaches who want to use the certificate as part of their Coach Licence.

### **Creativity in your Coaching**

This session aims to highlight the importance of developing new and innovative ways to approach coaching practice in the future. Reflecting on the need to be creative, dynamic and forward thinking, you will learn how to engage those involved in sport to likely ensure a lifelong participation. This session will be interactive and thought provoking!

### **Developing a Marketing Strategy**

With so many marketing options out there it can leave you in a muddle. This seminar will guide you through the marketing minefield and help you attract new members, raise funds or enhance your club's profile.

### **Adapting your Practice to Coach Disabled Participants.**

Experts from Disability Sports Coach will be on hand to run a practical and theoretical workshop for coaches on how to adapt your delivery to include more participants with disabilities.

**FOR MORE INFORMATION EMAIL**  
[clubconversations@surreycc.gov.uk](mailto:clubconversations@surreycc.gov.uk)

## Surrey Playing Field Contacts

We have a contact for each council area in Surrey. We have one officer who looks after county wide projects; he can also put you in touch with the officer who is appropriate for your request. The details are shown below:

### County Development Officer

Mr Barry Hitchcock, MBE, Tel: 01483 410165 email: [barry.hitchcock@gmx.co.uk](mailto:barry.hitchcock@gmx.co.uk)

### Borough Development Officers

|                               |   |
|-------------------------------|---|
| <b>Elmbridge</b>              | Mr Mike Armitage, Tel: 07930 405788, email: <a href="mailto:mike.j.armitage@btinternet.com">mike.j.armitage@btinternet.com</a>    |
| <b>Epsom &amp; Ewell</b>      | Mr Andrew Tibble, Tel: 07773 149755, email: <a href="mailto:atibble@hotmail.co.uk">atibble@hotmail.co.uk</a>                      |
| <b>Guildford</b>              | Mrs Heather Dean, Tel: 01483 535283, email: <a href="mailto:heather.dean@ukgateway.net">heather.dean@ukgateway.net</a>            |
| <b>Mole Valley</b>            | Mr Bob Higson, Tel: 01306 886043, email: <a href="mailto:r1hgn@higsonweb.com">r1hgn@higsonweb.com</a>                             |
| <b>Reigate &amp; Banstead</b> | Mr Mike Hughes, Tel: 0208 668 3314, email: <a href="mailto:mikehhughes60@gmail.com">mikehhughes60@gmail.com</a>                   |
| <b>Runnymede</b>              | Mr Keith Heal, Tel: 01784 435423, email: <a href="mailto:wkheal@sky.com">wkheal@sky.com</a>                                       |
| <b>Spelthorne</b>             | Mrs Shirley Winson, email: <a href="mailto:shirleywinson21@gmail.com">shirleywinson21@gmail.com</a>                               |
| <b>Surrey Heath</b>           | Mr Grant Simmons, email: <a href="mailto:gsimmons@ravenscote.surrey.sch.uk">gsimmons@ravenscote.surrey.sch.uk</a>                 |
| <b>Tandridge</b>              | Mr Denham Earl, Tel: 020 8660 6621, email: <a href="mailto:dm_laearl@hotmail.com">dm_laearl@hotmail.com</a>                       |
| <b>Waverley - Eastern</b>     | Mr Martin Maybrey BEM, Tel: 01483 893209, email: <a href="mailto:martin.maybrey@btinternet.com">martin.maybrey@btinternet.com</a> |
| <b>Waverley - Western</b>     | Mr Brian Greig, Tel: 01252 793762, email: <a href="mailto:briangreig@fsmail.net">briangreig@fsmail.net</a>                        |
| <b>Woking</b>                 | Cllr Ian Eastwood, Tel 01483 481864, email: <a href="mailto:cllrian.eastwood@woking.gov.uk">cllrian.eastwood@woking.gov.uk</a>    |

### Other Officers you may need to contact are:

|   |  |
|---|--|
| <b>Director</b>                                     | Mr David Gill, Tel: 07798 667662, email: <a href="mailto:dandcgill@sky.com">dandcgill@sky.com</a>  |
| <b>Honorary Secretary</b>                           | Mr Jim Faulkner, BEM, Tel: 01483 275628, email: <a href="mailto:jim_faulkner@talk21.com">jim_faulkner@talk21.com</a>   |
| <b>Honorary Planning Officer</b>                    | Mr Paul Garber Dip TP, Dairy House, The Street, Capel, Dorking RH5 5ER<br>Tel: 01306 711015, email: <a href="mailto:pgarber@btinternet.com">pgarber@btinternet.com</a>     |
| <b>Children's Play Provision and Safety Advisor</b> | Mr Jean Wenger MIEW RPIIAM,<br>50 Hurst Park Road, Twyford, RG10 0EY. Tel. 07970 764 804,<br>email: <a href="mailto:jeanwenger@activerms.org">jeanwenger@activerms.org</a> |

## Welcome to our new Borough Development Officer for Epsom and Ewell Andrew Tibble



Andrew has been a resident of Epsom & Ewell for nearly 25 years and is married with two children.

He retired from a career in education, latterly as Principal of Ewell Castle School. He enjoyed playing, in particular, rugby, hockey & cricket and has coached & managed team sports in schools & clubs, and at county and international level.

He is currently Chairman of Beddington CC in the Surrey Championship and a hockey umpire.

This newsletter is produced quarterly by Surrey Playing Fields  
[www.surreyplayingfields.co.uk](http://www.surreyplayingfields.co.uk)

**Editor - Don Raffin**

Brownings Down Cottage, Warren Road, Guildford, GU1 2HQ  
Tel: Home - 01483 531608 - Mobile - 07757 943866 - Email - [raffin@ntlworld.com](mailto:raffin@ntlworld.com)

The inclusion of any products or services in this newsletter implies no endorsement by the SPF.

Whilst every care is taken with the content, no responsibility can be accepted for errors or admissions made in good faith.